

# ADAMS

## COMMERCIAL & LARGE RESIDENTIAL GAS & OIL FIRED FURNACES

### The Furnace for Every Application:



#### HIGHBOY SERIES

Available for either residential, commercial or light industrial use. Input sizes from 70,000 to 1,000,000 BTU/Hr. These compact highboy models will fit into utility rooms, basements or right on a factory floor. Standard models are equipped with front flues; rear flues are available on special order. Two stage firing is available on 700,000 and 1,000,000 BTU models.

#### HORIZONTAL SERIES

Especially designed for convenient installation in garages, attics or crawl space installations in homes, stores, service stations, factories and warehouses.



No furnace or utility room needed. Hanger channels, filters and 2-stage pump are optional. Two stage firing is available on 700,000 and 1,000,000 BTU models.



#### COUNTERFLOW SERIES

The Counterflow model is specifically designed for use in concrete slab buildings or those with crawl space areas using perimeter or radial type systems. Non-combustible base available for installation on wood floors. Available from 90,000 to 1,000,000 BTU/Hr. Standard models are equipped with front flues; rear flues available on special order. Two stage firing is available on 700,000 and 1,000,000 BTU models.

#### LOWBOY SERIES

Designed for buildings or homes with basements; Heat exchangers are heavy gauge, cylindrical designed steel. Standard models are equipped with rear flue. Front flue models available on special order. Available from 90,000 to 1,000,000 BTU/Hr. Two stage firing is available on 700,000 and 1,000,000 BTU models.



ETL LISTED

CONFORMS TO  
UL STD 727

Intertek  
4004374

CERTIFIED TO  
CAN/CSA STD B140.4

#### CONVERTS EASILY TO COOLING

All of the furnaces shown here are easily adapted for use as summer air-conditioning units. Simply add a cooling package to an existing gas or oil-fired warm air furnace. All air-conditioners are air cooled and require no water source. Complete range of models and sizes are available.

AHRI CERTIFIED™  
www.ahridirectory.org

C

Commercial Furnaces  
DOE 10 CFR Part 431



# SPECIFICATIONS

## AACOV HIGHBOY

| Model Number | BTU/Hr. Input | BTU/Hr. Output | CFM @ .20 | MTR. H.P. | CFM @.50 ESP COOL. | MTR. H.P. | FLUE DIA. |
|--------------|---------------|----------------|-----------|-----------|--------------------|-----------|-----------|
| AACOV175     | 175,000       | 140,000        | 1400      | 1/2       | 2000               | 3/4       | 6"        |
| AACOV230     | 230,000       | 184,000        | 1800      | 3/4       | 2100               | 1         | 8"        |
| AACOV350     | 350,000       | 280,000        | 2600      | 1         | 3000               | 1-1/2     | 9"        |
| AACOV500     | 500,000       | 400,000        | 4000      | 2         | 4200               | 2         | 12"       |
| AACOV700     | 700,000       | 560,000        | 5200      | (2) 1     | 6000               | (2) 1-1/2 | (2) 9"    |
| AACOV1000    | 1,000,00      | 800,000        | 8000      | (2) 2     | 8400               | (2) 2     | (2)       |

Standard models are equipped with front flue, rear flues are available.

## AACO LOWBOY

|          |          |         |      |       |      |           |        |
|----------|----------|---------|------|-------|------|-----------|--------|
| AACO175  | 175,000  | 140,000 | 1400 | 1/2   | 2000 | 3/4       | 6"     |
| AACO230  | 230,000  | 184,000 | 1800 | 3/4   | 2100 | 1         | 8"     |
| AACO350  | 350,000  | 280,000 | 2600 | 1     | 3000 | 1-1/2     | 9"     |
| AACO500  | 500,000  | 400,000 | 4000 | 2     | 4200 | 2         | 12"    |
| AACO700  | 700,000  | 560,000 | 5200 | (2) 1 | 6000 | (2) 1-1/2 | (2) 9" |
| AACO1000 | 1,000,00 | 800,000 | 8000 | (2) 2 | 8400 | (2) 2     | (2)    |

Standard models are equipped with rear flue, front flues are available.

## AOCF COUNTERFLOW

|          |          |         |      |       |      |           |        |
|----------|----------|---------|------|-------|------|-----------|--------|
| AOCF175  | 175,000  | 140,000 | 1400 | 1/2   | 2000 | 3/4       | 6"     |
| AOCF230  | 230,000  | 184,000 | 1800 | 3/4   | 2100 | 1         | 8"     |
| AOCF350  | 350,000  | 280,000 | 2600 | 1     | 3000 | 1-1/2     | 9"     |
| AOCF500  | 500,000  | 400,000 | 4000 | 2     | 4200 | 2         | 12"    |
| AOCF700  | 700,000  | 560,000 | 5200 | (2) 1 | 6000 | (2) 1-1/2 | (2) 9" |
| AOCF1000 | 1,000,00 | 800,000 | 8000 | (2) 2 | 8400 | (2) 2     | (2)    |

Standard models are equipped with front flue, rear flues are available.

## ASO HORIZONTAL

|         |          |         |      |       |      |           |        |
|---------|----------|---------|------|-------|------|-----------|--------|
| ASO175  | 175,000  | 140,000 | 1400 | 1/2   | 2000 | 3/4       | 6"     |
| ASO230  | 230,000  | 184,000 | 1800 | 3/4   | 2100 | 1         | 8"     |
| ASO350  | 350,000  | 280,000 | 2600 | 1     | 3000 | 1-1/2     | 9"     |
| ASO500  | 500,000  | 400,000 | 4000 | 2     | 4200 | 2         | 12"    |
| ASO700  | 700,000  | 560,000 | 5200 | (2) 1 | 6000 | (2) 1-1/2 | (2) 9" |
| ASO1000 | 1,000,00 | 800,000 | 8000 | (2) 2 | 8400 | (2) 2     | (2)    |

Standard models are equipped with front flue, rear flues are available.

**ADAMS**  
MANUFACTURING COMPANY

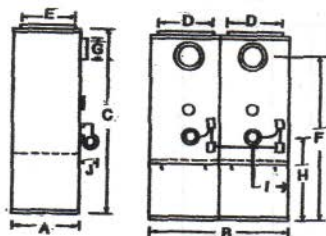
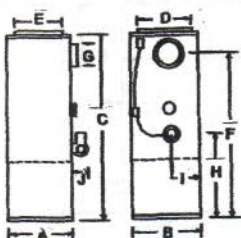
9790 Midwest Ave. • Cleveland, Ohio 44125

(216) 587-6801

adamsx@att.net

Available from:

## DIMENSIONS

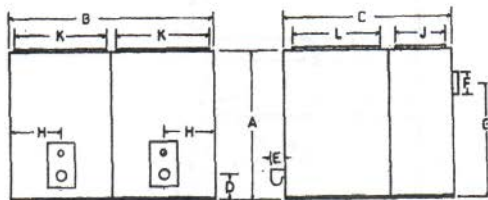
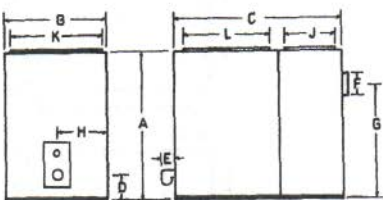


AACOV175 - AACOV500

## HIGHBOY

AACOV700 - AACOV1000

| Model     | A   | B   | C   | D   | E   | F   | G   | H   | I     | J   |
|-----------|-----|-----|-----|-----|-----|-----|-----|-----|-------|-----|
| AACOV175  | 27" | 27" | 72" | 22" | 22" | 56" | 6"  | 30" | 13.5" | 8"  |
| AACOV230  | 30" | 30" | 76" | 26" | 26" | 63" | 8"  | 36" | 15"   | 10" |
| AACOV350  | 36" | 36" | 76" | 34" | 34" | 69" | 9"  | 35" | 18"   | 10" |
| AACOV500  | 42" | 42" | 96" | 38" | 38" | 86" | 12" | 46" | 21"   | 10" |
| AACOV700  | 36" | 72" | 76" | 34" | 34" | 69" | 9"  | 35" | 18"   | 10" |
| AACOV1000 | 42" | 84" | 96" | 38" | 38" | 86" | 12" | 46" | 21"   | 10" |



AACO175 - AACO500

## LOWBOY

AACO700 - AACO1000

| Model    | A   | B   | C   | D     | E    | F   | G   | H     | J   | K   | L   |
|----------|-----|-----|-----|-------|------|-----|-----|-------|-----|-----|-----|
| AACO175  | 48" | 27" | 59" | 8"    | *    | 8"  | 33" | 13.5" | 16" | 22" | 22" |
| AACO230  | 52" | 29" | 63" | 9"    | *    | 8"  | 45" | 15"   | 19" | 24" | 24" |
| AACO350  | 53" | 36" | 61" | 11"   | 8.5" | 9"  | 37" | 18"   | 13" | 34" | 34" |
| AACO500  | 65" | 42" | 72" | 12.5" | 8.5" | 12" | 54" | 22"   | 13" | 38" | 38" |
| AACO700  | 53" | 72" | 63" | 11"   | 8.5" | 9"  | 37" | 18"   | 13" | 34" | 34" |
| AACO1000 | 65" | 85" | 72" | 12.5" | 8.5" | 12" | 54" | 22"   | 13" | 38" | 38" |

\*Burner enclosed in furnace housing 175 & 230 models only.

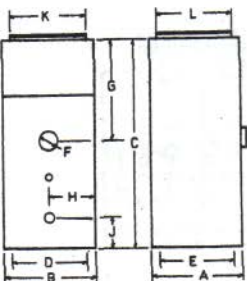
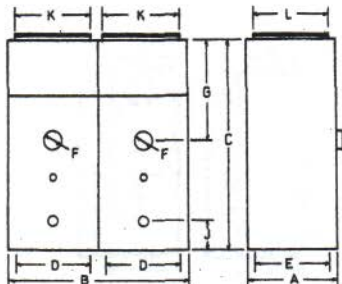
# ADAMS

9790 MIDWEST AVENUE  
CLEVELAND, OHIO 44125

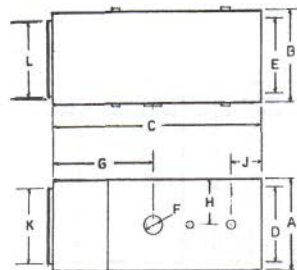
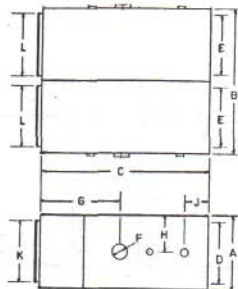
WWW.ADAMSMANUFACTURING.COM

Phone 216-587-6801

Fax 216-587-6807

**DIMENSIONS****AOCF175 - AOCF500****AOCF700 - AOCF1000****COUNTERFLOW**

| Model    | A   | B   | C   | D   | E   | F   | G   | H     | J   | K   | L   |
|----------|-----|-----|-----|-----|-----|-----|-----|-------|-----|-----|-----|
| AOCF175  | 27" | 27" | 72" | 22" | 22" | 6"  | 30" | 13.5" | 9"  | 20" | 25" |
| AOCF230  | 30" | 30" | 76" | 26" | 26" | 8"  | 38" | 15"   | 13" | 32" | 25" |
| AOCF350  | 36" | 36" | 76" | 34" | 34" | 9"  | 30" | 18"   | 13" | 32" | 32" |
| AOCF500  | 42" | 42" | 96" | 38" | 38" | 12" | 46" | 21"   | 13" | 40" | 40" |
| AOCF700  | 36" | 72" | 76" | 34" | 34" | 9"  | 30" | 18"   | 13" | 32" | 32" |
| AOCF1000 | 42" | 84" | 96" | 38" | 38" | 12" | 46" | 21"   | 13" | 40" | 40" |

**ASO175 - ASO500****ASO700 - ASO1000****HORIZONTAL**

| Model   | A   | B   | C   | D   | E   | F   | G   | H     | J   | K   | L   |
|---------|-----|-----|-----|-----|-----|-----|-----|-------|-----|-----|-----|
| ASO175  | 27" | 27" | 72" | 22" | 22" | 6"  | 30" | 13.5" | 9"  | 20" | 25" |
| ASO230  | 30" | 30" | 76" | 26" | 26" | 8"  | 38" | 15"   | 13" | 32" | 25" |
| ASO350  | 36" | 36" | 76" | 34" | 34" | 9"  | 30" | 18"   | 13" | 32" | 32" |
| ASO500  | 42" | 42" | 96" | 38" | 38" | 12" | 46" | 21"   | 13" | 40" | 40" |
| ASO700  | 36" | 72" | 76" | 34" | 34" | 9"  | 30" | 18"   | 13" | 32" | 32" |
| ASO1000 | 42" | 84" | 96" | 38" | 38" | 12" | 46" | 21"   | 13" | 40" | 40" |

**ADAMS**9790 MIDWEST AVENUE  
CLEVELAND, OHIO 44125[WWW.ADAMSMANUFACTURING.COM](http://WWW.ADAMSMANUFACTURING.COM)

Phone 216-587-6801

Fax 216-587-6807